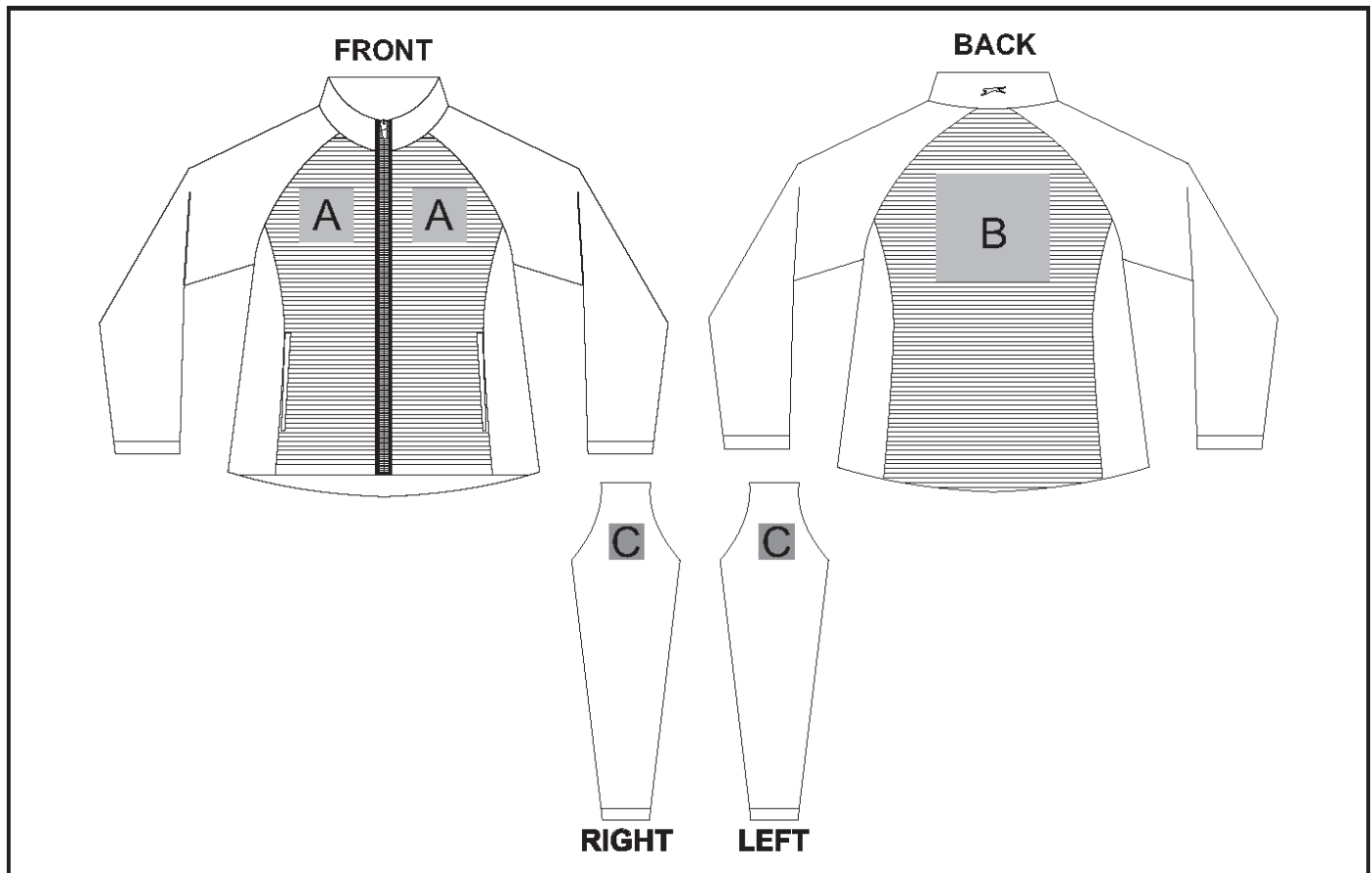


SLAZ-11427

Ladies Ridge Jacket



Need to know:

- Includes 1 Position Embroidery (setup fee applies)
- Cannot guarantee a 100% straight branding on any clothing item with check or stripe detail.
- The panels on the garment are inconsistent from Small to XL.
- The logo will be branded in the closest left / right chest and back panel, to the standard left/right chest and back position.
- DTC/EMB inclusive Parameters: Left/Right Chest or Back = 100mm x 100mm

Branding Options:

Position A

1. Embroidery (EM-CLOTHING)
N/A
Size: 100mm wide x 100mm high
2. Digital Transfer Clothing A6 (DTC-A6)
Full Colour
Size: 100mm wide x 100mm high
3. Silicone (STP-A)
N/A
Size: 30mm wide x 30mm high
4. Silicone (STP-B)
N/A
Size: 50mm wide x 50mm high
5. Silicone (STP-C)
N/A
Size: 80mm wide x 80mm high
6. Silicone (STP-D)
N/A
Size: 100mm wide x 40mm high

Position C

1. Embroidery (EM-CLOTHING)
N/A
Size: 80mm wide x 80mm high
2. Digital Transfer Clothing A6 (DTC-A6)
Full Colour
Size: 80mm wide x 80mm high
3. Screen Print (SC)
6 Colours
Size: 80mm wide x 60mm high
4. Silicone (STP-A)
N/A
Size: 30mm wide x 30mm high
5. Silicone (STP-B)
N/A
Size: 50mm wide x 50mm high
6. Silicone (STP-C)
N/A
Size: 80mm wide x 80mm high

Position B

1. Embroidery (EM-CLOTHING)
N/A
Size: 100mm wide x 100mm high
2. Digital Transfer Clothing A6 (DTC-A6)
Full Colour
Size: 148mm wide x 105mm high
3. Digital Transfer Clothing A5 (DTC-A5)
Full Colour
Size: 210mm wide x 148mm high
4. Silicone (STP-A)
N/A
Size: 30mm wide x 30mm high
5. Silicone (STP-B)
N/A
Size: 50mm wide x 50mm high
6. Silicone (STP-C)
N/A
Size: 80mm wide x 80mm high
7. Silicone (STP-D)
N/A
Size: 120mm wide x 40mm high